

OPERATION MANUAL FOR AVM-USB2

2016/04/11
Watec Co., Ltd.

REVISION HISTORY

Revision	Date	Changed
1.0	2016.3.7	1 st Release
2.0	2016.4.11	2 nd Release *Renamed the jig board to "AVM-USB2"

CONTENTS

REVISION HISTORY	1
INTRODUCTION.....	3
Including	3
Support camera.....	3
Equipment	3
PC REQUIREMENTS.....	3
USB CABLE REQUIREMENT.....	3
INSTALL	4
UNINSTALL	4
DESCRIPTION OF THE APPLICATION	5
Menu	6
File.....	7
Tool	8
Help	9
Connection Mode	6
DISCONNECTED MODE.....	6
CONNECTED MODE	6
Parameter Setting	10
AE	10
BLC.....	11
SETUP.....	12
BRIGHTNESS.....	13
WB.....	14
ENHANCE	15
MIRROR.....	16
COLOR/MONO.....	17
GAMMA.....	18
ERROR MESSAGE	19
OPERATION PROCEDURE.....	20
Caution	20

INTRODUCTION

Including

AVM-USB2 1pc



Support camera

WAT-240E/FS model only

Equipment

PC REQUIREMENTS

OS : Windows 7, Windows 8/8.1, Windows 10

USB : USB standard 1.1, 2.0, 3.0

USB CABLE REQUIREMENT

CABLE TYPE : A (PC side) - micro-B ([AVM-USB2] side)

CABLE LENGTH : Less than 5m

INSTALL

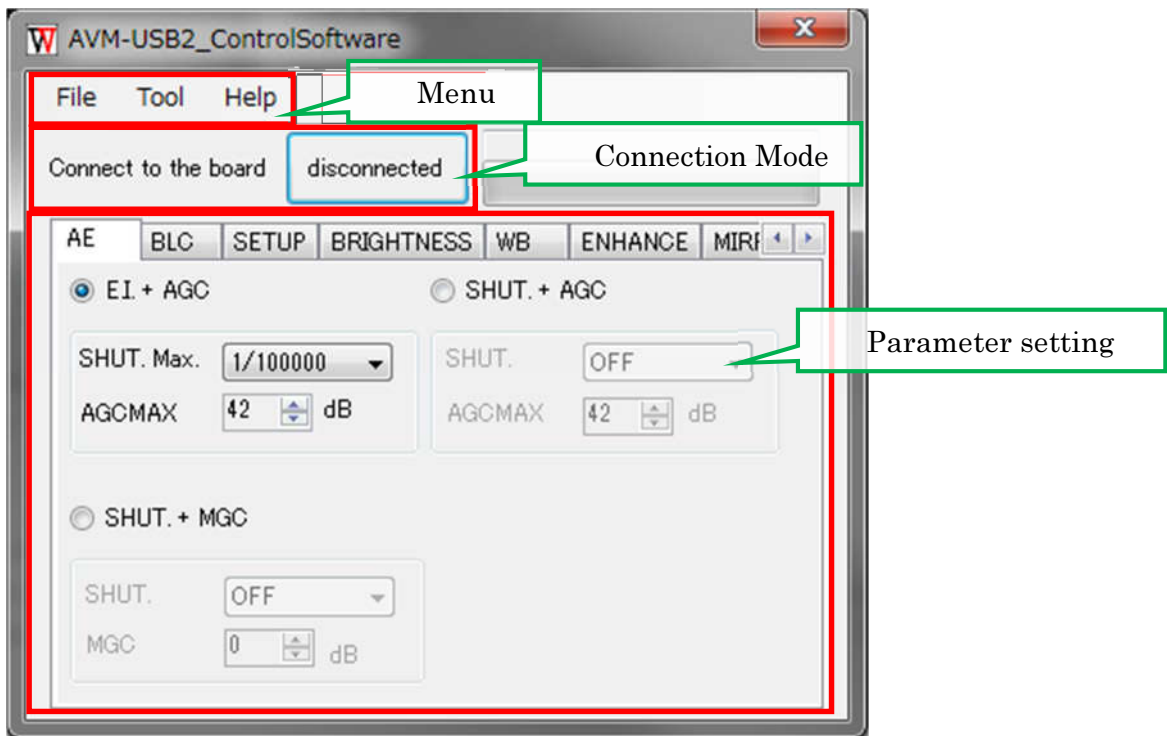
Unzip AVM-USB2_ControlSoftware_(R)_E120.zip

- AVM-USB2_ControlSoftware_(R)_E120.exe
- SLABHIDDevice.dll
- SLABHIDtoSMBus.dll
- ei_agc_max.csv
- initial_rom.csv
- shut_agc_max.csv
- initial.txt … WAT-240E/FS factory default file

UNINSTALL

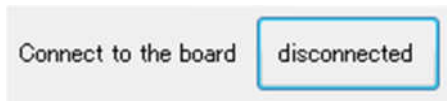
Delete unzipped files.

DESCRIPTION OF THE APPLICATION



Connection Mode

DISCONNECTED MODE



Not connected to the camera. The software starts up in this mode.
It will not be reflected in the camera if you change the parameters.
You can use to create a parameter file without a camera connection.
When you press the [disconnected] button, and then move to [connected] mode.

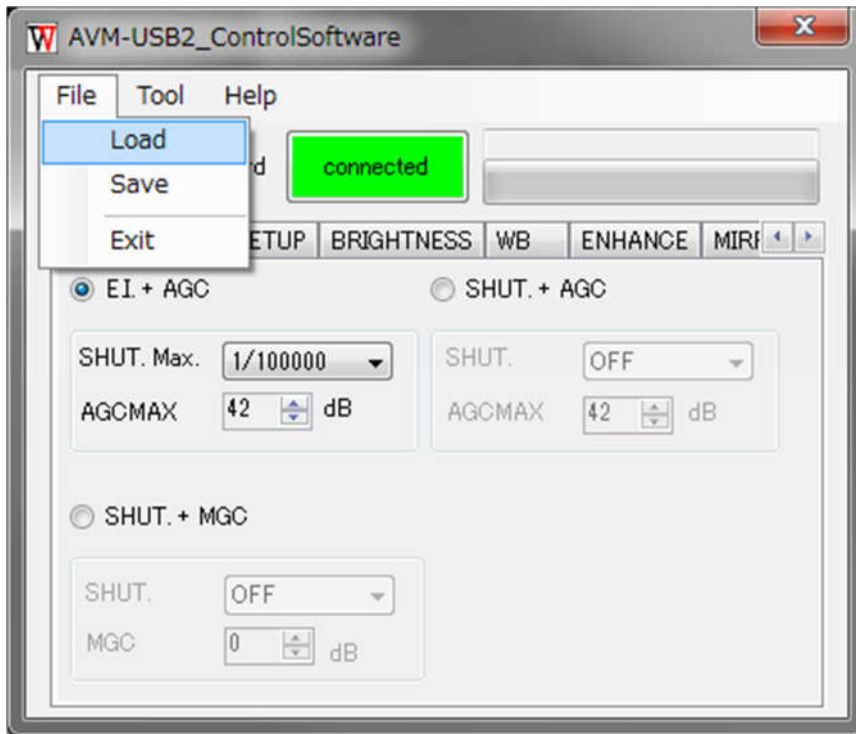
CONNECTED MODE



It connected to the camera.
It will be reflected in the camera if you change the parameters.
When you press the [connected] button, and then move to [disconnected] mode.

Menu

File



Load

Load the parameter file.

In the case of the CONNECTED MODE, the parameter settings are sent to the camera and software window.

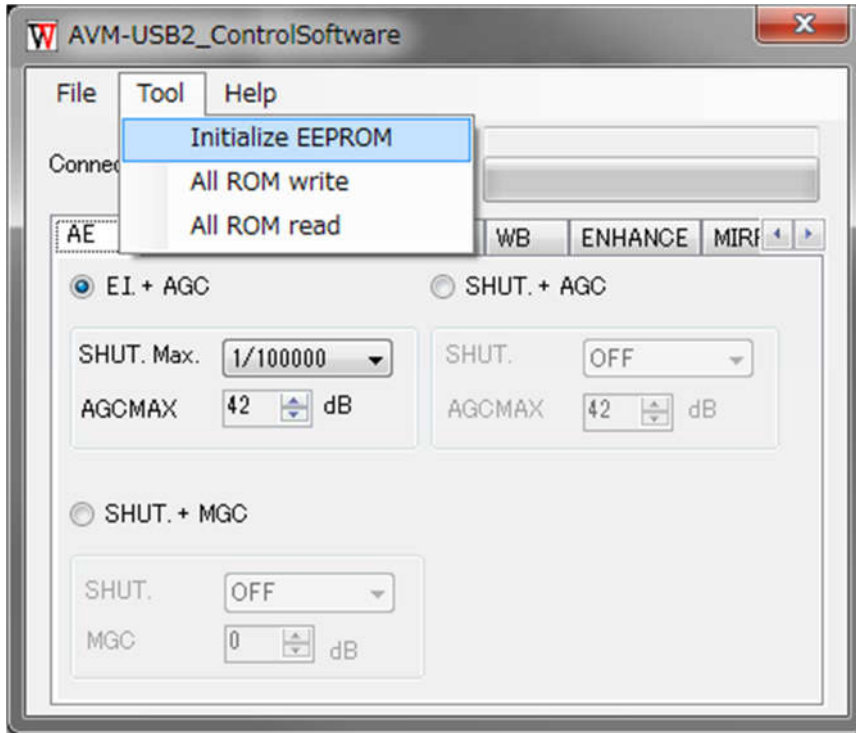
In the case of the DISCONNECTED MODE, the parameter settings are sent to the software window only.

Save

Save the parameters on the current software window to a file.

Exit

Exit this software.



Initialize EEPROM

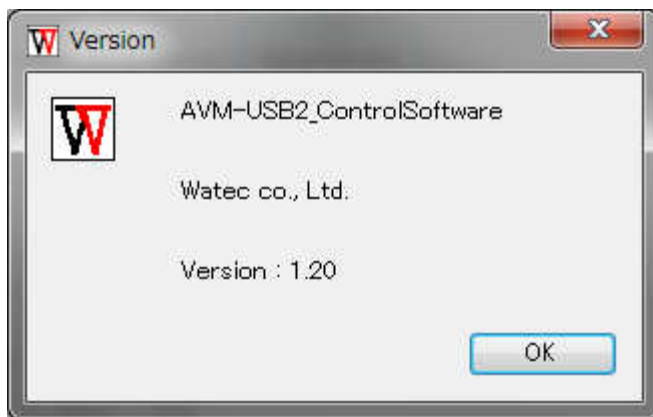
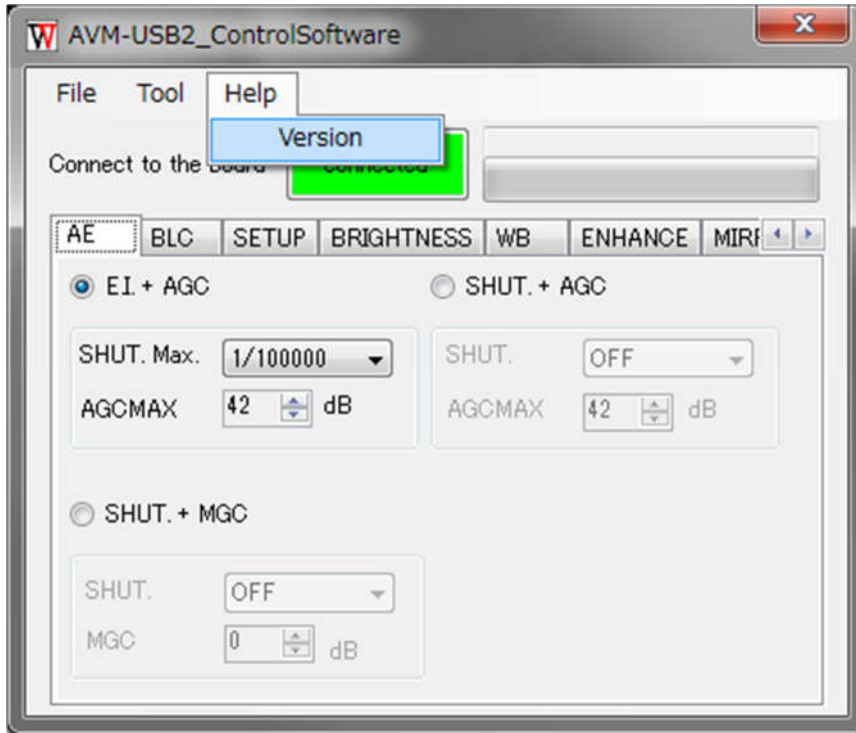
Rewrite the parameters of the camera to the factory default settings.

All ROM write

Write the parameters on the current software window to the connected camera.

All ROM read

Read from the parameters on the connected camera to the current software window.



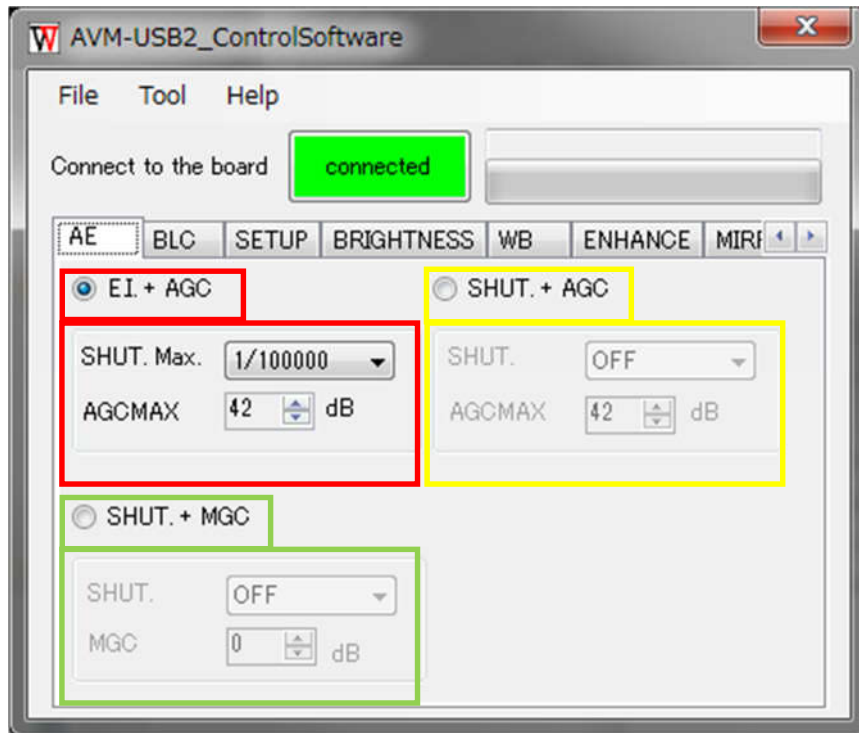
Version

Show the version of this software.

Parameter Setting

AE

Set the exposure mode.



E.I + AGC

Adjust the exposure with the electronic shutter and the automatic gain control. The maximum electronic shutter speed and the maximum gain can be selected.

SHUT + AGC

Adjust the exposure with fixed electronic shutter and the automatic gain control. The electronic shutter speed can be selected in OFF or FL. The range of the maximum gain can be selected.

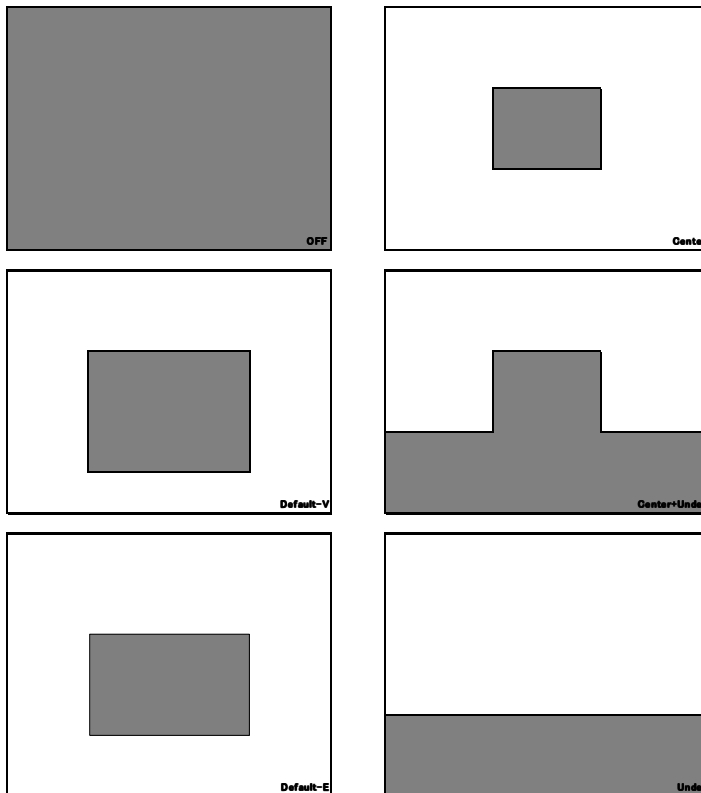
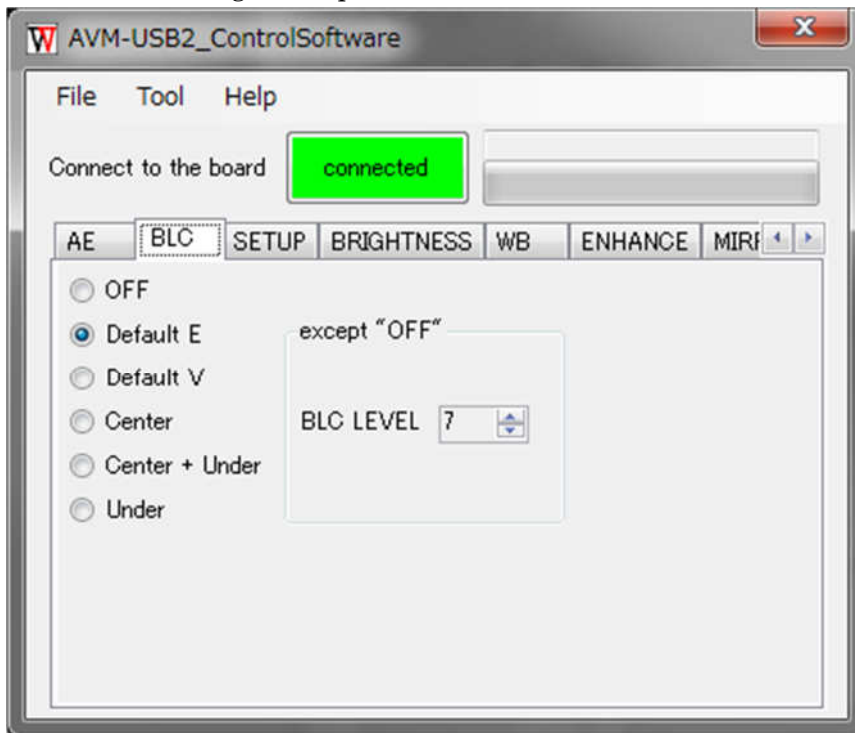
SHUT. + MGC

Fixed exposure mode.

The electronic shutter speed and the gain can be selected arbitrarily.

BLC

Select the backlight compensation mode.

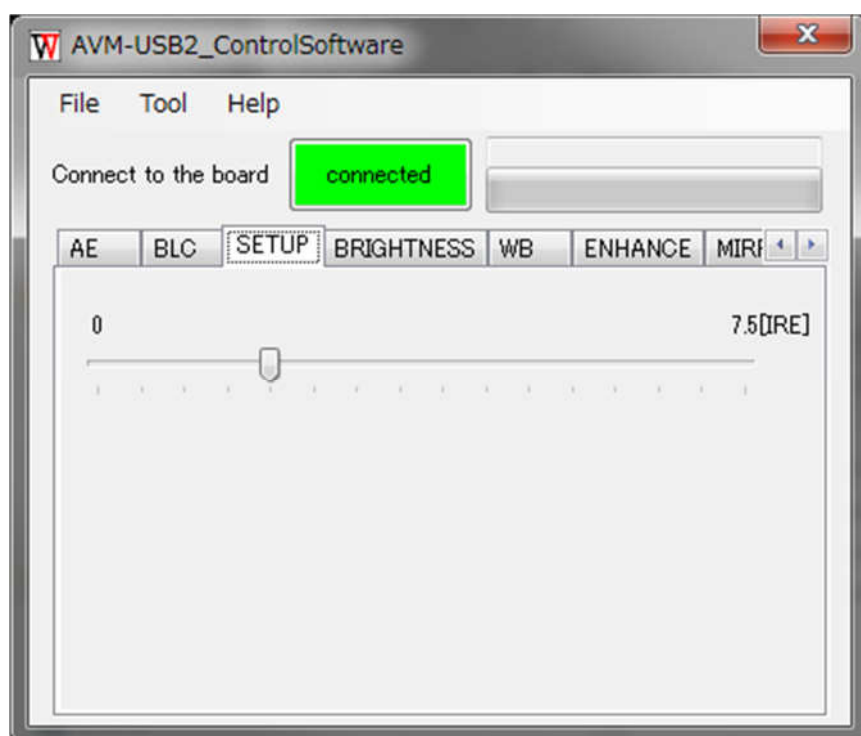


■ : Weighted Area.

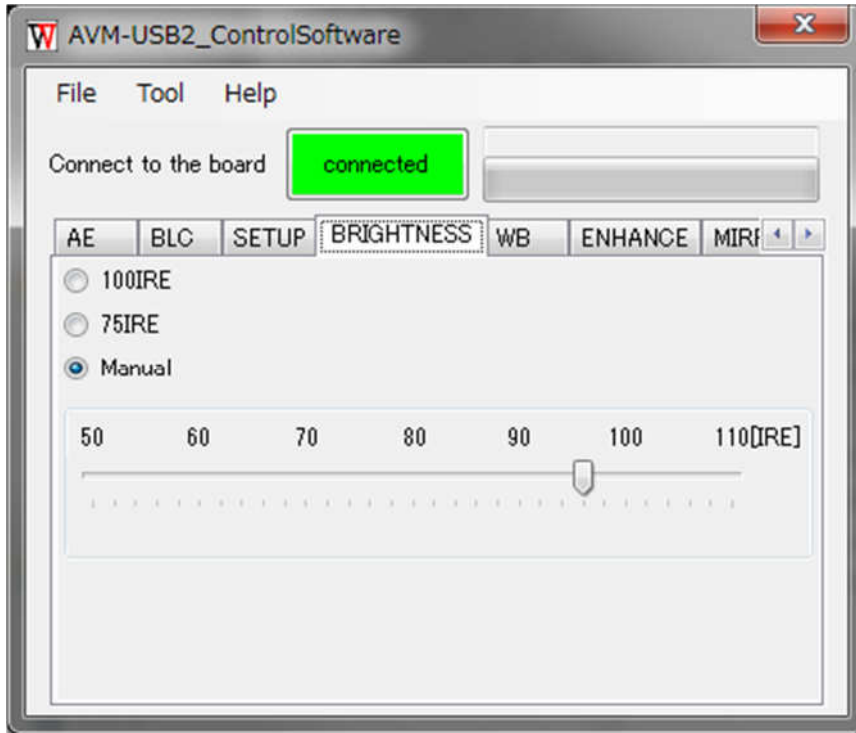
BLC LEVEL

Adjust a compensation level.

When the value is increased, the correction becomes stronger.



BRIGHTNESS



100IRE

Preset [100IRE]

75IRE

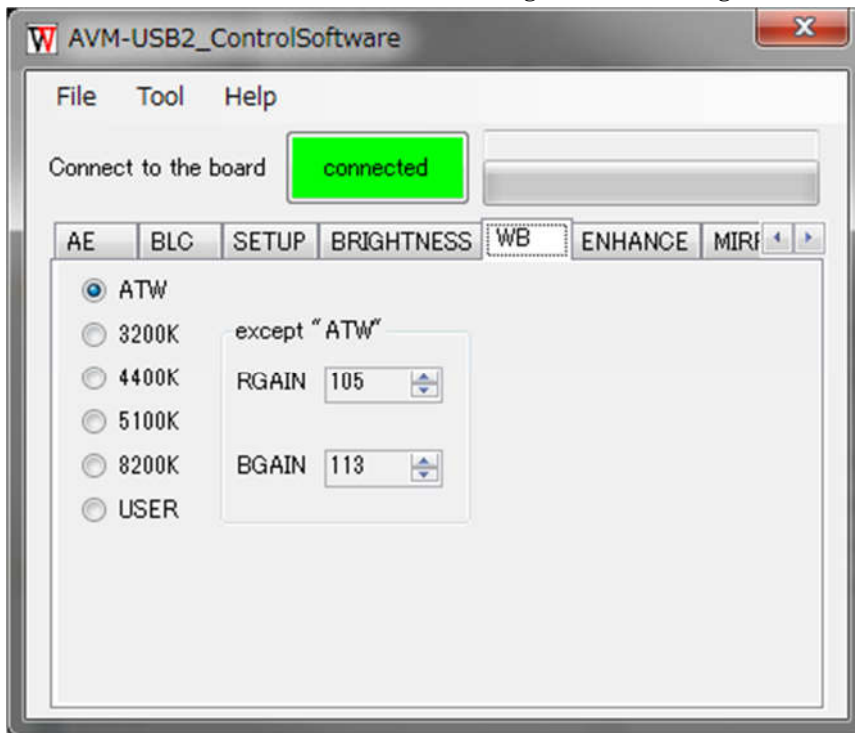
Preset [75IRE]

Manual

Select brightness level manually.

WB

Set the white balance mode and tuning the R and B gain.



ATW

The RGAIN and the BGAIN will be controlled automatically by camera.

3200K

Use for the Incandescent light bulb.

4400K

Use for the reddish fluorescent lamp.

5100K

Use for the bluish fluorescent lamp.

8200K

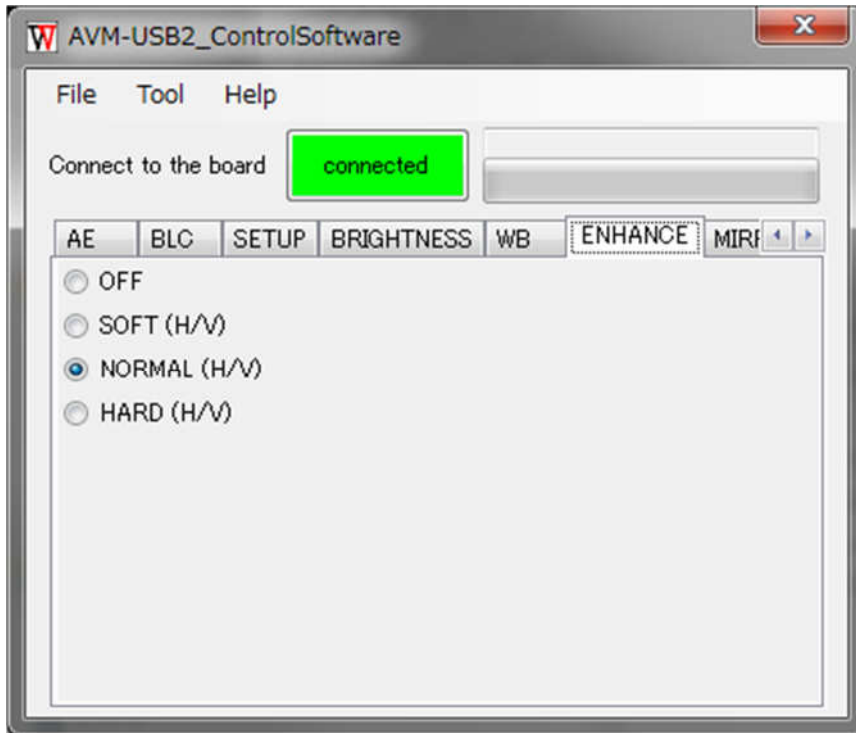
Use for the extremely bluish lamp.

RGAIN/BGAIN

In the mode of non- ATW, you can fine-tune the RGAIN and BGAIN.

ENHANCE

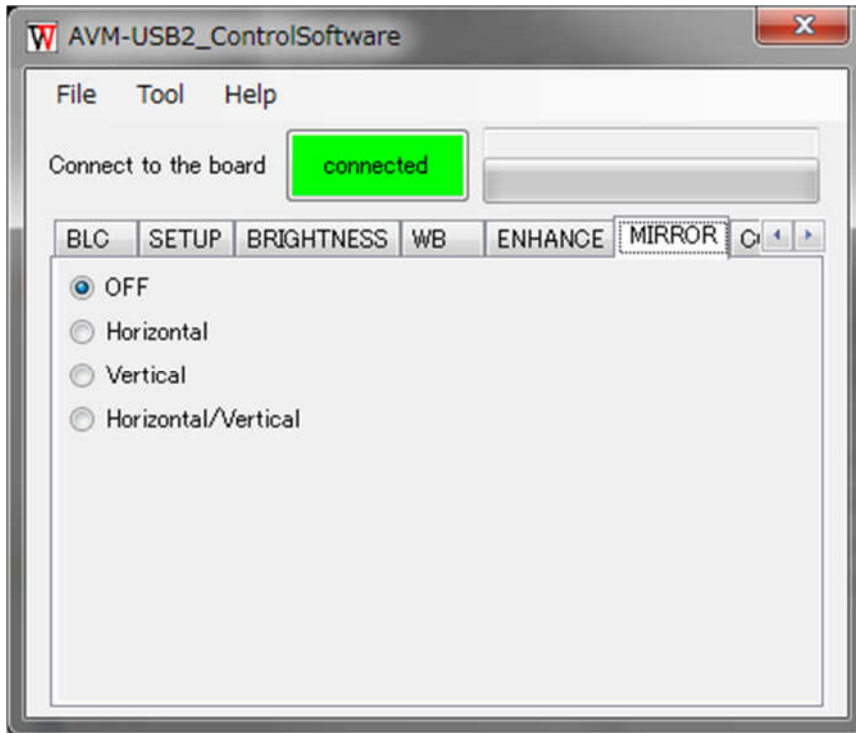
Setting for the edge enhancement of vertical and horizontal directions



- OFF
- SOFT (H/V)
- NORMAL (H/V) : Default
- HARD

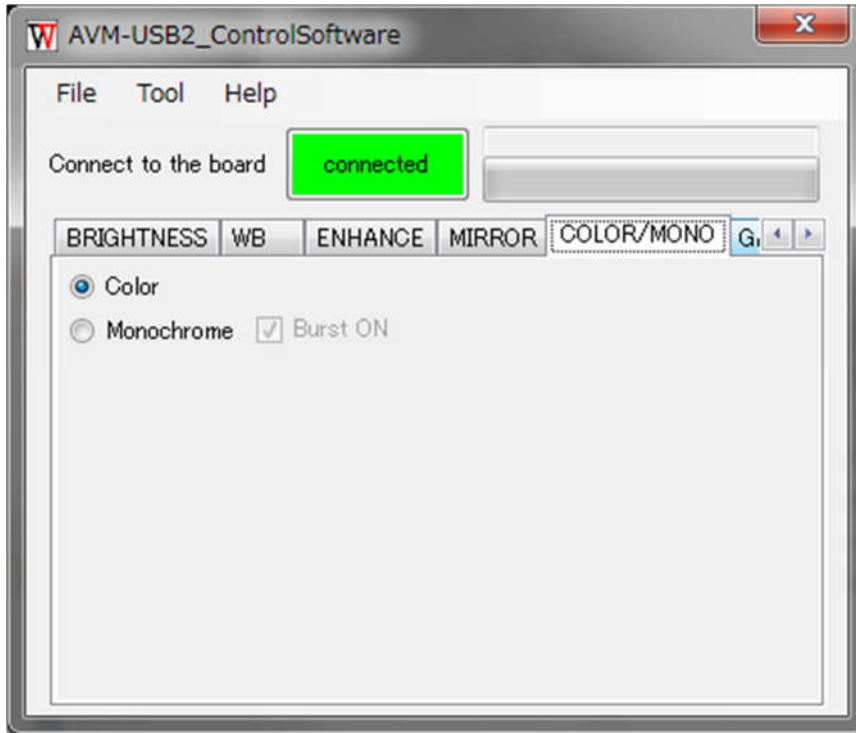
MIRROR

Set the mirror image mode



- OFF : Default
- Horizontal
- Vertical
- Horizontal / Vertical

COLOR/MONO

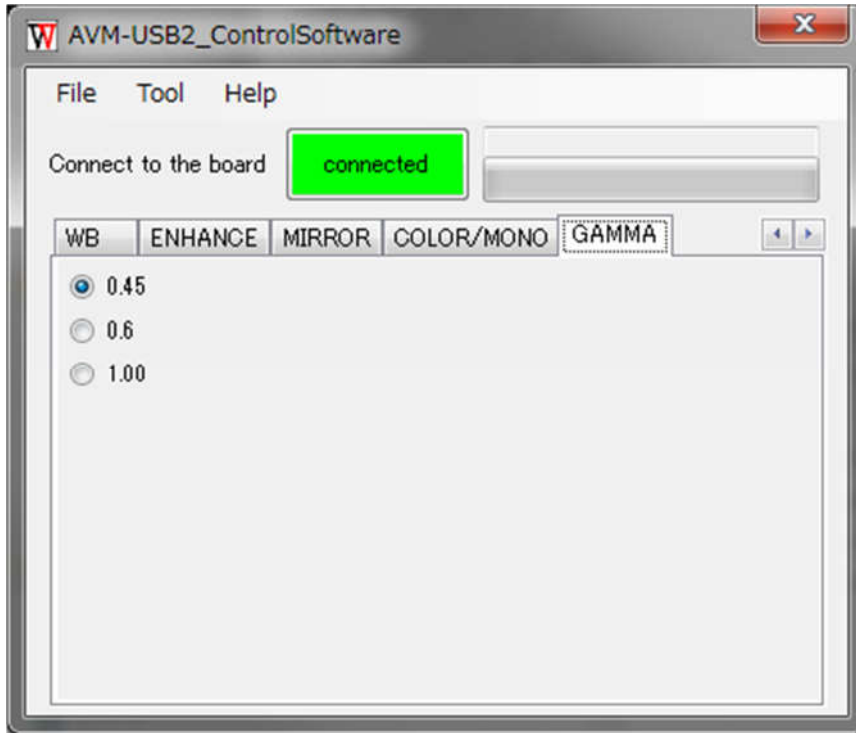


- Color
- Monochrome

Burst ON

If checked, Output a monochrome video signal with the color burst.

GAMMA



0.45

Correct with a gamma of about 0.45 for CRT gamma 2.2.

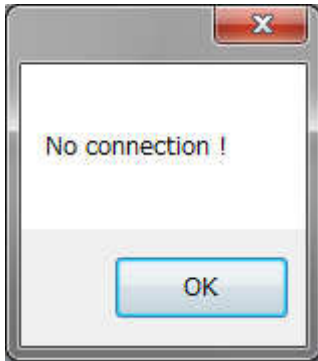
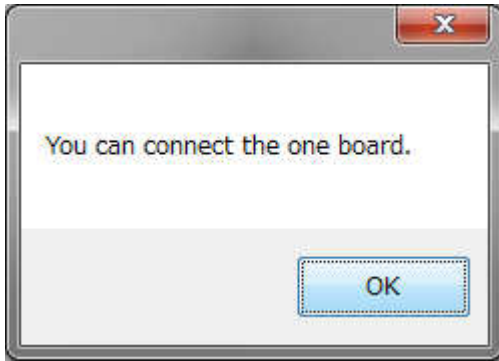
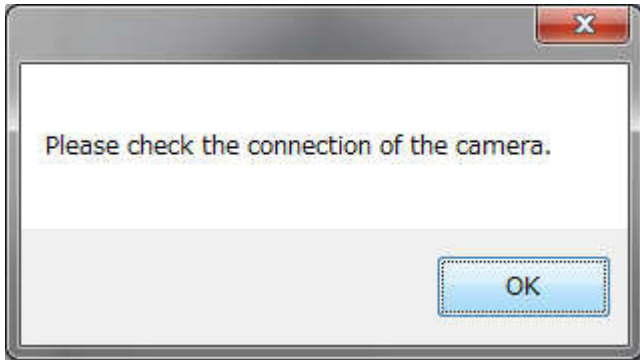
0.6

Correct with a gamma of about 0.6.

1.0

No correction (linear)

ERROR MESSAGE

MESSAGE	SOLUTION
 <p>The screenshot shows a standard Windows-style error dialog box. The title bar is grey with a red 'X' icon in the top right corner. The main area is white and contains the text "No connection !" in a black sans-serif font. At the bottom center, there is a blue button with the text "OK" in white.</p>	<p>AVM-USB2 was not detected.</p> <p>Please check the connection of the USB cable.</p>
 <p>The screenshot shows an error dialog box with a grey title bar and a red 'X' icon. The main area is white and contains the text "You can connect the one board." in a black sans-serif font. At the bottom right, there is a blue button with the text "OK" in white.</p>	<p>Multiple AVM-USB2 have been detected.</p> <p>Please connect only one.</p>
 <p>The screenshot shows an error dialog box with a grey title bar and a red 'X' icon. The main area is white and contains the text "Please check the connection of the camera." in a black sans-serif font. At the bottom right, there is a blue button with the text "OK" in white.</p>	<p>Unable to connect to AVM-USB2 and the camera.</p> <p>Please re-check the connection between the camera and AVM-USB2.</p>

OPERATION PROCEDURE

1. How to Connect the Camera

- (1) Turn on the camera.
- (2) Connect AVM-USB2 and the camera.
- (3) Connect the PC and AVM-USB2.

2. How to Disconnect the Camera

- (1) Make sure the power supply to the camera is off.
- (2) Disconnect the camera from AVM-USB2.

Caution
